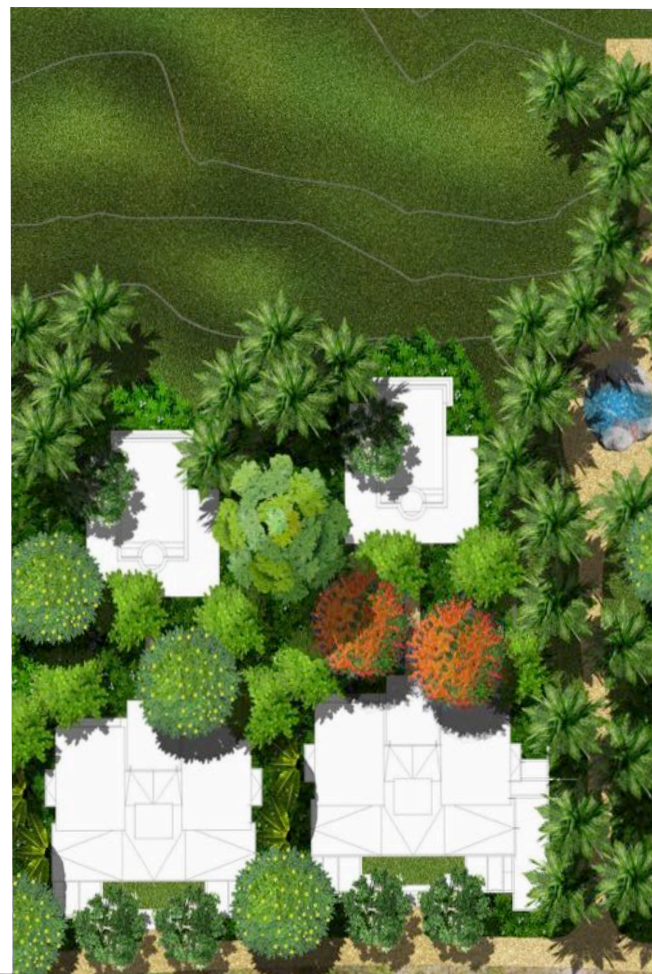




BALI LANDSCAPING





BALI LANDSCAPING

Company Profile

Index

About Us	Page 2
Services	3
i. Landscape Architectural Design	3
ii. Design Plan and Installation	3
iii. Landscape Consultant Services.....	4
iv. Landscape Maintenance Contracts	4
v. Garden Renovations	5
vi. Project Management	5
Landscape Supplies and Products	6
Hardscape Construction and Modifications	6
Clientele	7
Contact Details	8

About Us

Bali Landscaping was founded by Turino Agus Sutanto, a professional landscaper with over 15 years experience in landscape services and maintenance. He developed his skills and love of plants and gardens during his ten years in charge of maintaining the grounds and gardens of the Ritz-Carlton Resort and Spa, Bali.



Gianyar Bali

We are very much a family business, with both Turino and his wife Karen actively involved in design, supervision and liaison with our clients. We have gained a reputation for providing personalised service and enthusiasm for every project. We strive to keep the spirit of excellence which exists within our office environment and believe that success is achieved when our clients expectations have been exceeded.

Landscaping

Landscaping is a combination of art , science and nature.

Bali Landscaping uses its skills and experience to create living, working, recreational and leisure environments, using beautiful plants and materials provided by nature.

We are aware that a well designed landscape in keeping with your buildings and the surrounding areas will enhance your corporate image or will greatly increase the living quality and value of your home. An attractive and healthy landscape is also a valuable asset that our clients will enjoy for years to come.

Services

Services we provide cover a wide scope from "complete design and preparation of tender documents" for very large corporate projects, down to "design and installation" for small privately owned properties.

(i) Landscape Architectural Design

This can be provided for any type of Landscape whether for commercial or residential purposes and includes:-

- Initial Consultation
- Pre-concept Artist's Impressions
- Construction details and specifications (including site and building elevations / grading plan)
- 3D Landscape Visuals / Perspectives
- Detailed Planting List



Royal Casa Grande, Ubud



Kaba Kaba

(ii) Design-Plan and Installation

For limited timeframe projects or for clients who don't require detailed drawings or tender documents.

- Initial Consultation (Discussing and exploring ideas for plant selection, garden design and features, structure, etc, and how your space can compliment your architecture)
- Preparing soil and sight ahead of planting. (taking into consideration sun exposure and other elements)
- Landscape Installation
- Post – Construction services

Whether you choose to do maintenance yourself, or work with us, we provide advice on maintenance needs to ensure maximal results.

(iii) Landscape Consultant Services

A well designed and properly maintained landscape increases the value of any landscape investment. We provide expert horticultural advice on garden maintenance and future development plans as well as expert advice on protecting your garden from reptile and insect infestation.

We are supported by IPB Bogor Agriculture Institute and the Agriculture Faculty of Unud University, Bali for soil assessment, pH tests and information as to tolerance of plants and trees across may diverse soil and climate conditions through out most of South East Asia.



Villa Pujian at Lodtunduh

(iv) Landscape Maintenance Contracts

Our maintenance programs are planned in accordance with the size and requirements of your property. A team of properly trained gardeners are available to handle fertilizing, periodic weeding, shaping and pruning of trees and shrubs, lawn care, import of new soils, garden leveling, and care for plants that aren't flowering. Reports are provided which include suggestions for future improvements.

(vi) Garden Renovations

We can transform your garden by modifying the design, carrying out major clearups, moving large trees and rocks, removing weeds and wild jungle growth, and replanting with plants, shrubs and trees compatible with the soil, and architecture at your location.



Kerobakan Project

(vii) Project Management

Our team consists of site architects, administration specializing in the field of landscape construction and a budget analyst. We oversee the project, time frames and scheduling and the work of landscape construction and design where more than one landscape contractor may be used to carry out a larger scale project. Our team is proficient in working with landscape software and understand local regulations regarding plantings and landscape design.



Kaba Kaba Estate

Landscape Supplies

We constantly seek new varieties for expanding our list of planting needs. Bali Landscaping is acclaimed for the procurement of exotic rare species of plants and trees all of which can be transported or shipped carefully to your landscape project.

- Mass quantity of trees and shrubs
- Aquatic plants
- Indoor plants
- Ground covers
- Climbers / wall covers
- Topsoil
- Fertilizer/ kompos
- Vertical garden/ living wall
- Herb garden
- Roof Garden
- Garden accessories (statuary, ornaments, artwork, dripping pots, waterfeatures, garden arch)
- Bamboo fence
- Traditional Huts
- Natural Stones (stepping stones, loose pebbles, gravel)
- Automatic irrigation system design, installation, maintenance and repair for landscape or Agriculture
- Garden lighting and decorative lights

Hardscape Construction and Modifications

- Retaining walls
- Planter box
- Garden bridge
- Fish and koi Ponds
- Rockery
- Walkways
- Driveway
- Pools
- Spas
- Pool deck
- Pergola and bale
- Gazebos

Clientele

COMMERCIAL

Beach Walk – Kuta, Bali

Harris Hotel- (vertical garden) Jl. Bypass Ngurah Rai, Kuta, Bali

Chandra Villa- Jl. Oberoi

Kaba Kaba Estate, Tabanan

Kamaniya, Seminyak, Bali

Tanadewa Resort and Spa, Nusa Dua, Bali

8 Degree South, Pecatu, Bali

The Royal Cassagrande, Ubud, Bali

The Relax Bali, Karangasem

Hilton Garden Inn Hotel, Kuta, Bali

Baliland, Pemogan, Bali

Havaianas, Seminyak, Bali

Bukit Doa, Pecatu, Bali

Bali Turtle Island Development Project, Serangan Island

RESIDENTIAL

Marijaya House, Kuala Lumpur, Malaysia

Magith Residence, Sanur, Bali

Villa Pujian, Lod Tunduh Ubud, Bali

Jasmine Villa, Gianyar, Bali

Vic Villa, Bumbak, Seminyak, Bali



Vertical Garden

Harris Hotel Jl. Bypass Ngurah Rai

C.V. Bali Landscaping

Office : Jl. Batuyang Gg.Anggrek
No. 3, Batubulan, Gianyar,
Bali,
Indonesia

Phone : + 62 81 999 159 600
+ 62 81 238 799 70
+ 62 81 999 887 997

E-mail : info@balilandscaping.com

Website : www.balilandscaping.com

Showgarden and Nursery : Jl. Raya Silungan
Silungan Village
Lodtunduh,
Ubud,
Bali,
Indonesia